

GLK126 Technical specifications

VFL				
Model	GLK126-15	GLK126-20	GLK126-30	GLK126-50
Power	≥15mW	≥20mW	≥30mW	≥50mW
Measuring length (Typ.)	8~10km	≥10km	≥10km	≥10km
Mode	CW/1Hz/2Hz			
Wavelength	650±20nm			
LED	2 pcs			
Fiber type	SM/MM			
Connector	universal			
Power supply	3.7V , 18650 Li-battery (2200mAh)			
Operating temperature	-10℃~+50℃			
Storage temperature	-40℃~+70℃			
Relative humidity	0~95%RH, no condensation			
Weight	About 200g			
Size	148mm×29mm×29mm			
Note: the measured length will vary due to the actual fiber quality.				

Configuration list

NO.	Name	Quantity	Remarks
1	Host	1	Including battery
2	User's Manual	1	
3	Data Line	1	
4	Qualification Certificate/ Service Guarantee Card	1	
5	Sling	1	

GLK126 Optical Fiber Visual Fault Locator



Product overview

GLK126 series VFL has high-power of 650nm laser as emitting device, and the output power can reach more than 15mW. It is suitable for SM/MM optical fiber, used to detect optical fiber connectivity and fault location such as optical fiber fracture and bending. It is equipped with 18650 rechargeable battery (2200mAh) with large capacity for power supply. The circuit adopts an over-current, over-voltage and over-efficiency protection mechanism to effectively protect the battery and charging circuit.

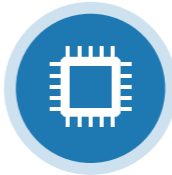
The universal adapter is used, which is suitable for FC, SC, ST connectors. It is an ideal tool to test various types of optical fiber jumpers, ribbon and bundle pigtails, as well as on-site or optical fiber line maintenance.

Product features

- Compact appearance, Small volume, Easy to carry
- Rotary switch, convenient operation, prevent power loss caused by accidental touch
- Universal joint, replaceable adapter and ceramic core
- High transmittance red light source, Easily penetrate long-distance optical fiber
- Type-C charging port, stable current , Charging safety
- Portable source , emergency charging for smart devices
- Large capacity 18650 battery(2200mAh), long endurance
- CW/1Hz/2Hz output modes, stable light , light source forceful



Aluminum alloy fuselage  
Metallic texture  
Feel and texture coexist



High-integrated chip  
Integrate power management  
and signal modulation



Highlight LED  
Easy to deal with  
dark environments



Large capacity Li-battery  
2200mAh, long endurance



Environmental adaptability  
-10°C~+50°C