

1 Number of Ports

Gateway \ Port Type	WAN	LAN	FXS
DAG1000-4S	1	1	4
DAG1000-8S	1	3	8

Quick Installation Guide

- ☑ DAG1000-4S
- ☑ DAG1000-8S

2 Description of Indicators

Indicator	Definition	Status	Description
PWR	Power Indicator	On	The gateway is powered on
		Off	The gateway is powered off or there is no power supply
RUN	Running Indicator	Slow Flashing	The gateway is running properly
		Fast Flashing	SIP account is registered successfully
		Off	The gateway is running improperly
FXS	Telephone In-use Indicator	On	FXS port is currently occupied by a call
		Off	FXS port is idle or faulty
WAN/LAN	Network Link Indicator	Green Flashing	The gateway is properly connected to network
		Off	The gateway is not connected to network or network connection is improper
	Network Speed Indicator	On	Work at 100Mbps
		Off	Work at 10Mbps

Note: DAG1000-4S has no network speed indicator.

Thanks for Choosing Dinstar's VoIP Gateway!

Please read this guide carefully before installing the gateway. If you need any technical support, please contact us.

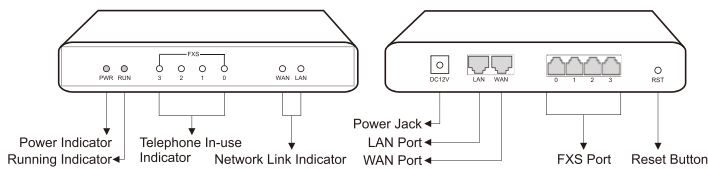
Tel: +86 755 61919966

Email: support@dinstar.com

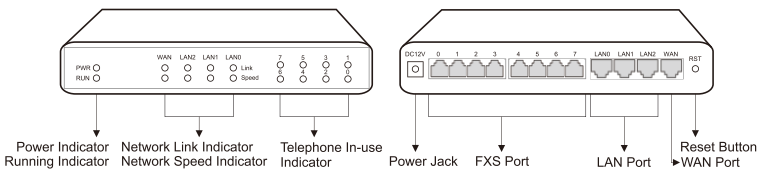
Website: www.dinstar.com

3 Indicators and Ports

► DAG1000-4S



► DAG1000-8S

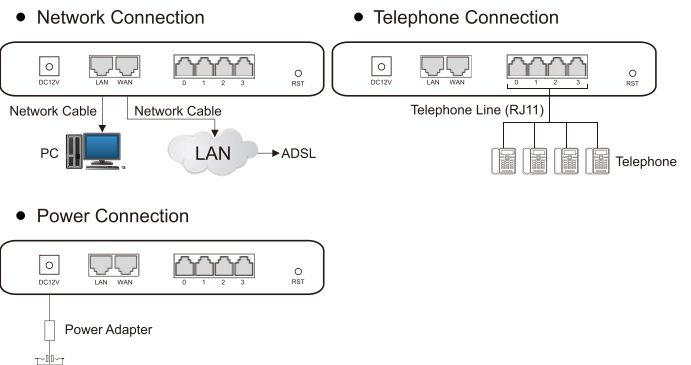


4 Installation Attentions

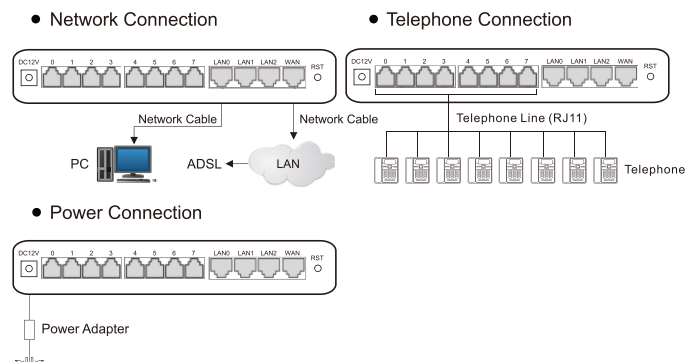
- ◆ Anti-jamming: to reduce the interference with telephone calls, it's highly recommended that telephone lines connected to the gateway should be placed away from power cables.
- ◆ Power supply: the power adapter of the gateway accepts DC input voltage of 12V. Please ensure safe and stable power supply.
- ◆ Network bandwidth: please ensure there is enough network bandwidth so as to guarantee stabilized running of the gateway.
- ◆ Temperature and humidity: to avoid any accident that might cause malfunction, it's advised to install the gateway in an equipment room where temperature and humidity are appropriate.
- ◆ Ventilation: to avoid overheating, please do not pile up the gateway with other devices and make sure the gateway has good ventilation around.
- ◆ Mechanical load: please make sure the gateway is placed steadily to avoid damage. It's highly advised to horizontally place the gateway on a flat surface or a cabinet.

5 Installation Instructions

► Connection Diagram for DAG1000-4S



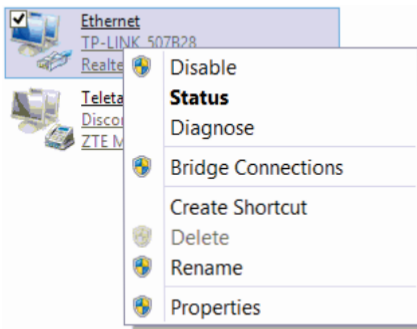
► Connection Diagram for DAG1000-8S



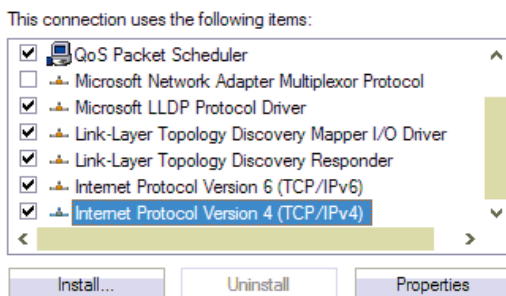
6 Modify PC's IP Address

To log in the Web Management System of the gateway, you need to modify the IP address of PC first to make it at the same network segment with the gateway.

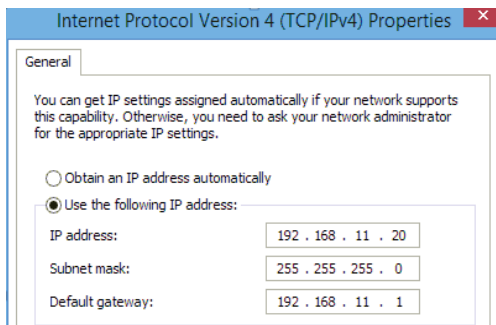
- 1 On the PC, click 'Network (or Ethernet) → Properties'.



- 2 Double-click 'Internet Protocol Version 4 (TCP/IPv4)'.



- 3 Select 'Use the following IP address', and then enter an available IP address '192.168.11.XXX' which is at the same network segment with '192.168.11.1'.



7 Log in Web Management System

Open a web browser and enter the gateway's IP address (default IP is 192.168.11.1). Then input username and password in the displayed login GUI. Both the default username and password are admin.

8 Modify Gateway's IP Address

If you want to modify the IP address of DAG1000-4S/8S, please click 'Network → Local Network' in the navigation tree on the left of the Web Management System, and then input new IP address and DNS server address on the displayed interface.

9 Configure SIP Server

Log in the Web Management System of the gateway, and then click **SIP Server** in the navigation tree and then enter the address of the SIP server which is to be registered. Click **Save** in the last.

Click **Port** in the navigation tree on the left, and then click **Add**. Input the SIP account and authentication password assigned by the SIP server.

Click **Save** and then restart the gateway for the new configurations to take effect.

10 Basic Operations

- ◆ Dial *158# to query the IP address of LAN port of the gateway;
- ◆ Dial *159# to query the IP address of WAN port of the gateway;
- ◆ Dial *114# to query the telephone number of a FXS port;
- ◆ Dial *165*000000# to restore default IP address, username and password;
- ◆ Restore factory default settings:
 - (1) dial *166*000000#;
 - (2) press the **RST** button for 7 seconds;
 - (3) Log in the gateway and then click '**Tools → Factory Reset**', then click **Apply** and restart the gateway.
- ◆ Dial *111# to restart the gateway.

11 More Details

This document only provides instructions for quick installation and basic configuration, For detailed configuration and parameter explanation, please make reference to user manual or ask for online technical support.

7 Log in Web Management System

Open a web browser and enter the gateway's IP address (default IP is 192.168.11.1). Then input username and password in the displayed login GUI. Both the default username and password are admin.

8 Modify Gateway's IP Address

If you want to modify the IP address of DAG1000-4S/8S, please click 'Network → Local Network' in the navigation tree on the left of the Web Management System, and then input new IP address and DNS server address on the displayed interface.

Honest, Concentrated, Innovative, Open

Dinstar Technologies Co., Ltd
Website: <http://www.dinstar.com>
Facebook: <http://www.facebook.com/dinstarvoip/>

